



ANNUAL REPORT 2024



Trinity College Dublin
Coláiste na Tríonóide, Baile Átha Cliath
The University of Dublin



University College Dublin



INTRODUCTION

The Academic Department of Palliative Medicine (ADPM) was set up by Professor Declan Walsh in 2012. It represents a collaboration between Trinity College Dublin (TCD), University College Dublin (UCD), and Our Lady's Hospice & Care Services (OLH&CS). Professor Walsh returned to the USA in 2016, but continued to support the ADPM in the following years. I was appointed in July 2020, and started working in the ADPM in January 2021.

The ADPM has continued to flourish in 2024, with graduation of Dr Niamh Cleary (MD, TCD), submission of dissertation by Dr Craig Gouldthorpe (PhD, TCD), registration of our sixth doctoral candidate, registration of our third MD candidate, and appointment of another research nurse. Currently, the ADPM are undertaking research within Our Lady's Hospice and Care Services, St James's Hospital, St Vincent's Hospital, St Luke's Hospital, and we have a number of studies involving sites in Ireland, Northern Ireland and the rest of the United Kingdom. We are also involved in a number of other international studies (outlined below).

I would like to thank Trinity College Dublin, University College Dublin, and Our Lady's Hospice and Care Services for their continued support of the ADPM. Moreover, I would like to thank Our Lady's Hospice and Care Services for continued hosting of the ADPM, and for their generous funding of two PhD candidates.



Professor Andrew Davies MB BS, MSc, MD, FRCP

Professor of Palliative Medicine
Trinity College Dublin
University College Dublin
Our Lady's Hospice & Care Services (Dublin)
University of Surrey, Guildford (United Kingdom)

Honorary Consultant in Palliative Medicine
St. James's Hospital (Dublin)
St. Vincent's Hospital (Dublin)

**Academic Department of Palliative Medicine
Education & Research Centre
Our Lady's Hospice & Care Services
Harold's Cross
Dublin
Ireland
D6W RY72
(01) 498 6235
Email: adpm@olh.ie**



Dr Niamh Cleary – Specialist Registrar in Palliative Medicine / Honorary Clinical Research Fellow

Niamh is on the specialist training scheme for Palliative Medicine in Ireland. She successfully completed her MD at TCD in 2024 (Supervisor – Prof Davies), and her dissertation title was “Investigation of oral problems using a novel oral symptom assessment tool in patients with advanced cancer and older patients with frailty”.



Dr Craig Gouldthorpe – Specialist Registrar in Palliative Medicine / Honorary Clinical Research Fellow

Craig is on the specialist training scheme for Palliative Medicine in the United Kingdom. He has completed his PhD project (Supervisor – Prof Davies), and has submitted his dissertation to TCD in October 2024. His research relates to circadian rhythm disorders in patients with advanced cancer. Craig was the Clinical Lecturer in Palliative Medicine at TCD.



Dr Jenny Power – Special Lecturer in Palliative Medicine at UCD

Jenny has completed specialist training in Palliative Medicine in Ireland. She is undertaking a PhD at UCD (Supervisor – Prof Davies), and is researching remote monitoring in patients with advanced disease. As Special Lecturer at UCD she coordinates palliative care teaching for the under-graduate/postgraduate medical students.



Dr Amy Taylor – Clinical Lecturer in Palliative Medicine at TCD

Amy is currently out of programme from her specialist training scheme for Palliative Medicine in the United Kingdom. She is undertaking a PhD at TCD (Supervisor – Prof Davies), and is researching the role of specialist palliative care in cancer survivorship. As Clinical Lecturer at TCD she coordinates palliative care teaching for the under-graduate medical students.



Marie Hannon – Honorary Clinical Research Fellow / PhD candidate

Marie is the Dietitian Manager at Our Lady's Hospice & Care Services. She is undertaking a PhD at UCD (Supervisors – Prof Davies & Prof Michael Connolly), and is researching taste disturbance in patients with advanced cancer.



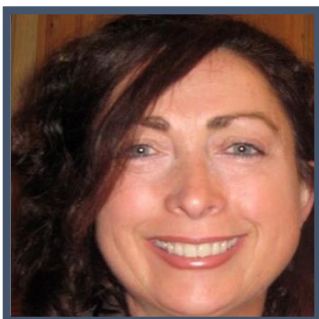
Shauna Munir – Honorary Clinical Research Fellow / PhD candidate

Shauna is an Advanced Nurse Practitioner in Palliative Care at Our Lady's Hospice & Care Services. She is undertaking a PhD at UCD (Supervisors – Prof Davies & Prof Michael Connolly), and is researching non-pharmacological interventions for sleep disturbance in patients with advanced cancer.



Dr Siofra Hearne – Honorary Clinical Research Fellow / MD candidate

Siofra is on the specialist training scheme for Geriatric Medicine in Ireland. She is registered for an MD at TCD (Supervisors – Prof Davies & Dr Amanda Lavan), and is researching cognitive impairment in older cancer patients. She is also working on the EU-Navigate project.



Norah Fagan – Research Nurse / PhD candidate

Norah Fagan is a Registered General Nurse, and joined the ADPM as a research nurse in 2021. She is undertaking a PhD at UCD (Supervisors – Prof Davies & Prof Michael Connolly), and is researching “death rattle” at the end of life.



Muireann McDonnell – Research Nurse / MSc candidate

Muireann has a degree in Children’s and General Nursing. She is registered for a MSc at UCD (Supervisors – Prof Andrew Davies & Prof Michael Connolly). She is the lead research nurse on the EU-Navigate study, and is working on a number of other projects within the ADPM.



Hailey Goffinet – Research Nurse

Hailey Goffinet is a registered nurse, and joined the ADPM as a research nurse in 2024. She is registering for a PhD at UCD in Spring 2025 (Supervisors – Prof Davies & Prof Michael Connolly), and will be researching “remote” vital signs monitoring in patients at the end of life.



Gemma O’Keeffe – Academic Department Coordinator

Gemma is academic secretary for Prof Davies, and she also provides administrative support to the ADPM team / research programme (and specifically to the EU-Navigate study).

Dr Suzanne Ryan – Consultant in Palliative Medicine / Honorary Clinical Research Fellow

Suzanne is a Consultant in Palliative Medicine at University Hospital Waterford. She is registered for an MD at TCD (Supervisor – Prof Davies), and is researching the efficacy of hypnotics for the treatment of sleep disturbance in palliative care patients.

RESEARCH ACTIVITY – ADPM Initiated Studies

- **CaRDIC I trial (Circadian activity Rhythm Disorder in Cancer)** – this was a multicentre, observational study to assess the validity of a novel screening tool for circadian rest-activity disorders in patient with advanced cancer. The study was completed in 2024, and was part of Dr Craig Gouldthorpe’s PhD project.
- **CaRDIC II trial (Circadian activity Rhythm Disorder in Cancer)** – this was a multicentre, interventional study to assess the feasibility of a multi-modal

intervention (i.e. CBT-I, bright light therapy, tailored exercise regimen) for treating circadian rest-activity disorders in patient with advanced cancer. The study was completed in 2024, and was part of Dr Craig Gouldthorpe's PhD project.

- **CHELsea (Clinically-assisted Hydration at End of Life) II trial** – this is a NIHR-funded, multi-centre (UK), cluster randomised trial of clinically assisted hydration in patients in the last days of life. Prof Davies is the Chief Investigator / grant holder for this trial. The study is open to recruitment, and will continue into 2025. Currently (December 2024), 1492 participants have been recruited to the trial. <https://www.surrey.ac.uk/chelsea-ii-trial>

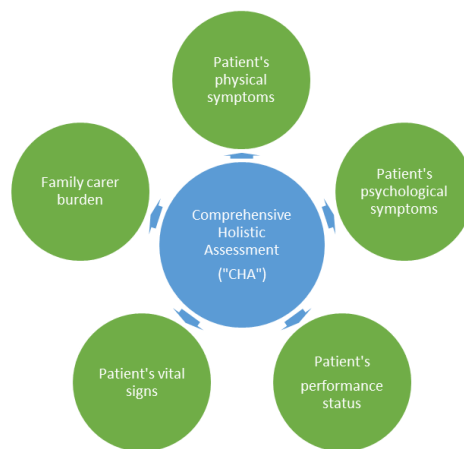


- **CORreCT (Cognition in Older adults with cancer Receiving systemic anti-Cancer Treatment)** – this is an observational (longitudinal) study of cognition in older adults with cancer during anticancer treatment. The study is open to recruitment, and will continue into 2025. It is part of Dr Hearne's MD project.
- **E-StOIC (European Study of Opioid-Induced Constipation)** – this was an international, multi-centre, observational study of opioid-induced constipation in patients with cancer. Prof Davies was the Chief Investigator / grant holder for this study, which was conducted in 10 European countries (Ireland, Denmark, Finland, France, Germany, Italy, Netherlands, Norway, Spain, and United Kingdom). The study has been completed (1200 participants), and the first of three related articles has been published (see below).
- **EU-Navigate study** – this is a Horizon Europe-funded, international, multi-centre, randomised study of “navigators” (volunteers) to support older cancer patients. Prof Davies is the Principal Investigator for this study in Ireland. The study is open to recruitment, and will continue into 2025. <https://eunavigate.com/>



- **EXTra (Efficacy of Xerostomia Treatments) I study** – this is a multicentre, crossover study of two saliva substitutes for the treatment of xerostomia in patients with advanced cancer. The study is open to recruitment, and will continue into 2025.
- **EXTra (Efficacy of Xerostomia Treatments) II study** – this is also a multicentre, crossover study of two saliva substitutes for the treatment of xerostomia in patients with advanced cancer. The study is open to recruitment, and will continue into 2025.

- **OASis (OSAS for Assessment oral Symptoms) III** – this is a multicentre, observational study of oral symptoms in frail elderly patients. The study is open to recruitment, and will continue into 2025.
- **POST (Palliative care and Oncology Survey on Terminology)** – this is an international (Ireland, United Kingdom), multi-centre, observational study of cancer patients’ views on the terms used to describe them, and specifically the term “cancer survivor”. The study is open to recruitment, and will continue into 2025. Currently (December 2024), 467 patients have been recruited in Ireland, and 294 in the United Kingdom, to the study. It is part of Dr Amy Taylor’s PhD project.
- **PRiSM (Specialist Palliative Care’s Role in Cancer Survivorship Model)** study – this is an international, e-Delphi study of key stakeholders’ opinions on the role of specialist palliative care in individuals living beyond cancer (“long term” cancer survivors). The study has been completed, and the data is being analysed. It is part of Dr Amy Taylor’s PhD project.
- **RSVP (Remote assessment of Symptoms and Vital signs in Palliative care) II study** – this is an interventional study to assess the feasibility of using remote monitoring (i.e. Remote Comprehensive Holistic Assessment / “R-CHA” – see figure) to better target intervention from a specialist palliative care team in community-based patients with advanced disease. The study is open to recruitment, and will continue into 2025. It is part of Dr Jenny Power’s PhD project.



R-CHA (Remote Comprehensive Holistic Assessment)

- **SWaN (Sleep Well at Night) study** – this is an interventional study to assess the feasibility of a multi-modal intervention (i.e. CBT-I, bright light therapy, tailored exercise regimen) for treating sleep disturbance in patient with advanced cancer. The study is open to recruitment, and will continue into 2025. It is part of Shauna Munir’s PhD project.
- **TPAC (Taste disturbance in Patients with Advanced Cancer) I study** – this is a multicentre, observational study to develop / validate an assessment tool for taste disturbance in patients with advanced cancer (the TQ-PAL). The study is open to recruitment, and will continue into 2025. It is part of Marie Hannon’s PhD project.

- **TPAC (Taste disturbance in Patients with Advanced Cancer) II study** – this is a multicentre, observational study of taste disturbance in patients with advanced cancer and xerostomia. The study is open to recruitment, and will continue into 2025. It is part of Marie Hannon’s PhD project.
- **How much do adult specialist palliative care professionals know about caring for children and young people with palliative care needs and how has education helped with their understanding?** – this is a pre / post assessment of the impact of a postgraduate paediatric palliative care course. It is part of Muireann McDonnell’s MSc.

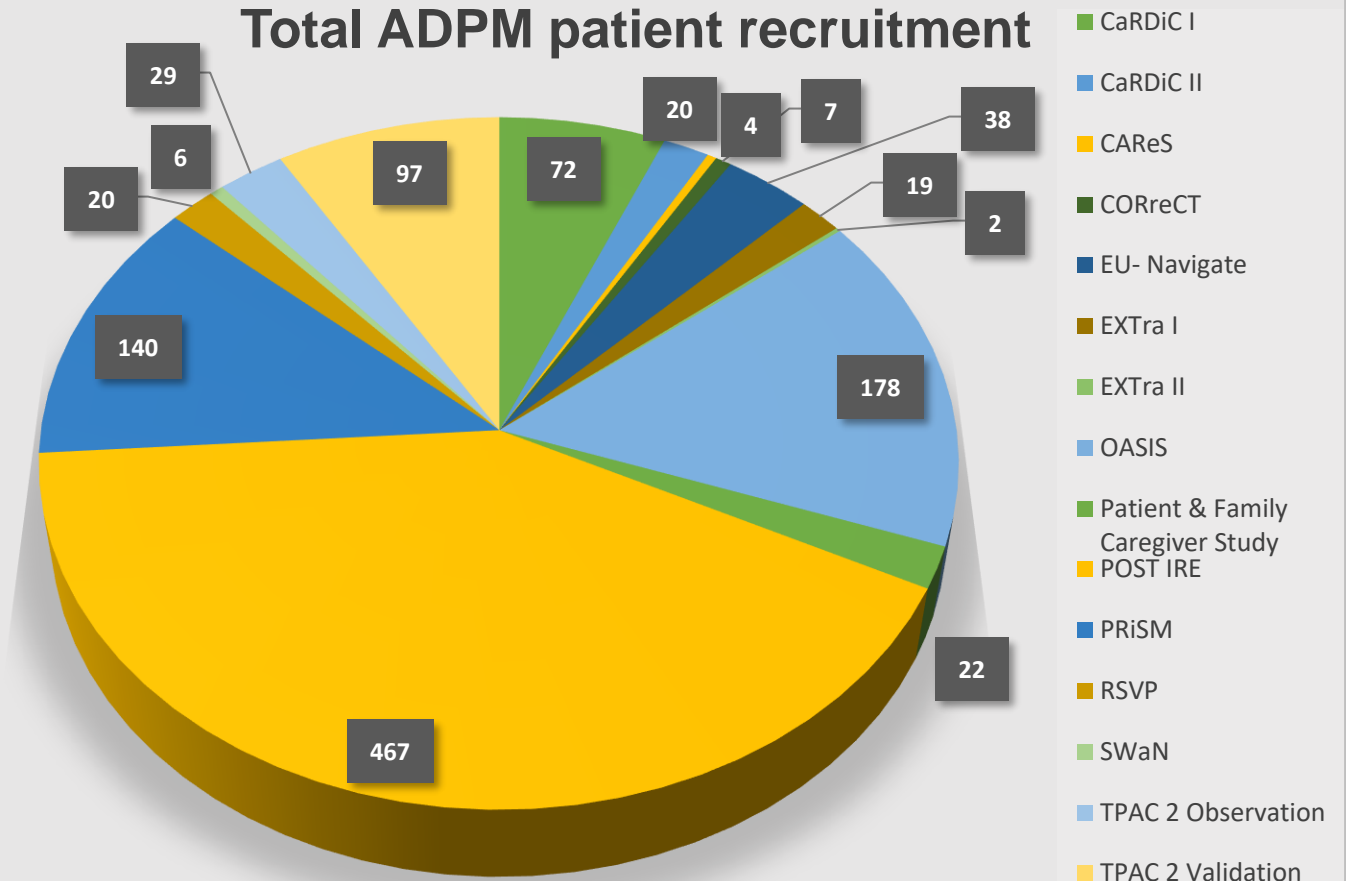
RESEARCH ACTIVITY – Non ADPM Initiated Studies

- **CAReS (Cancer Appetite Recovery Study) II** – this is a commercial, international, multi-centre, randomised controlled trial (phase II trial) of a synthetic cannabinoid for anorexia in cancer patients. Prof Davies is the Principal Investigator for this study in Ireland. The study is open to recruitment, and will continue into 2025. Currently (December 2024), the ADPM have recruited 4 participants.

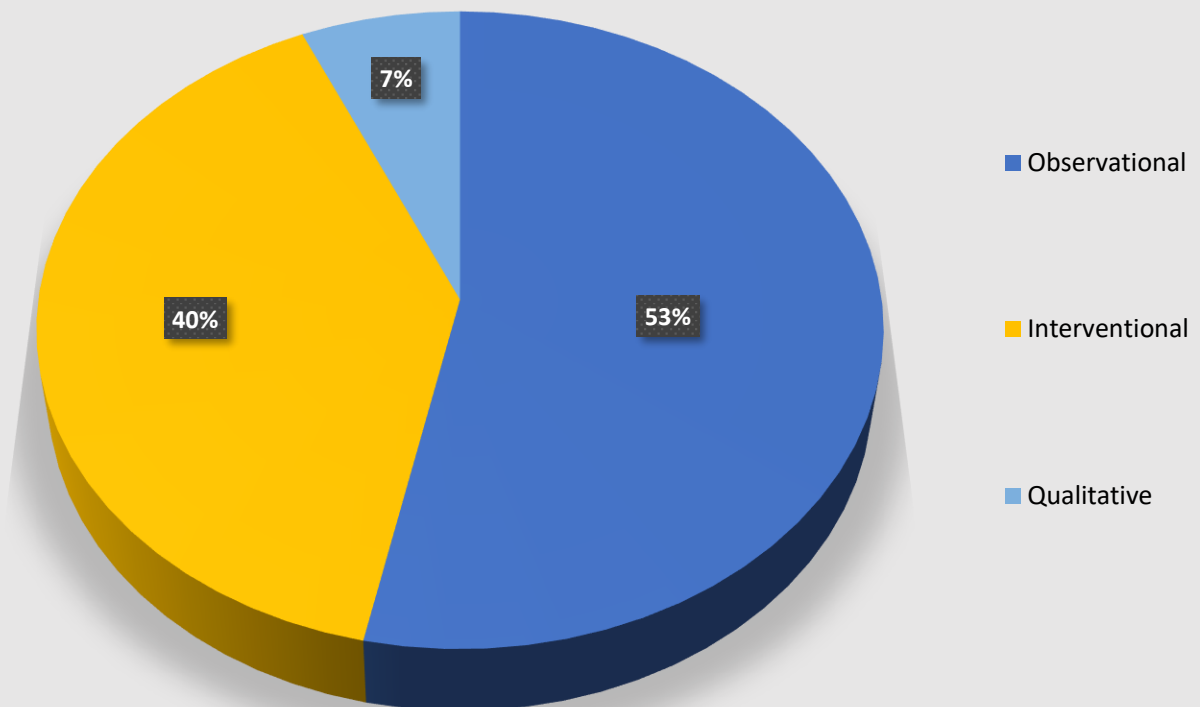


- **Patient and family caregiver treatment decision-making in specialist palliative care study** – this was a qualitative study about how patients and family carers make decisions about the patient’s care. The Principal Investigator was Dr Geraldine Foley (School of Medicine, Trinity College Dublin). The study has been completed, and the related article has been published (see below).
- **Japanese translation / validation of Oral Symptom Assessment Scale (OSAS)** – this is a collaboration with Tohoku University Graduate School of Dentistry (Sendai City, Japan).
- **Portuguese translation / validation of Oral Symptom Assessment Scale (OSAS)** – this is a collaboration with Polytechnic Institute of Portalegre (Portalegre, Portugal).
- **Chinese translation / validation of Breakthrough Pain Assessment Tool (BAT)** – this is a collaboration with Sun Yat-sen University Cancer Center (Guangzhou, China).

Total ADPM patient recruitment



Study type

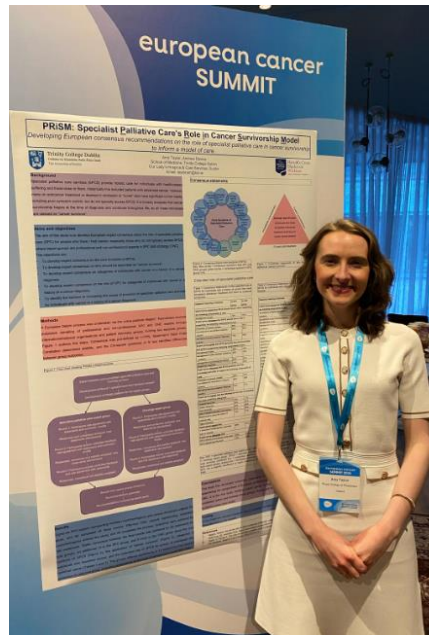


RESEARCH AWARDS & GRANTS

- Prof Davies: €964,170 from the European Health & Digital Executive Agency to undertake the EU - Navigate study (awarded 2021; duration 60 months).
- Prof Davies: €44,697 from HEREG - TCD Research Boost Programme 2024 (awarded 2024).
- Prof Davies: €12,840 from European Health & Digital Executive Agency to support the Interact project, which involves the development of a European, multi-professional core curriculum for healthcare professionals working within oncology (awarded 2021; duration 36 months).
- Prof Davies: €7,400 from Enterprise Ireland for coordination support for Marie Skłodowska-Curie Action, Doctoral Network application (awarded 2024).
- Prof Davies: £350,000 from Kyowa Kirin International to undertake the E-StOIC study (awarded 2021; duration 48 months).
- Prof Davies: £1,107,919 from NIHR Health Technology Assessment Programme (UK) to undertake the CHELsea II trial (awarded 2021; duration 48 months).
- Norah Fagan: €1,500 from OLH&CS (Student Bursary Award 2024).
- Prof Davies is part of a group of TCD academics who received a Trinity Research Doctorate Award in 2024.
<https://www.tcd.ie/graduatestudies/awards/trda-group/award-winners/2024-25.php>
- Prof Davies: Awarded the 2024 Distinguished Service Award by the Multinational Association of Supportive Care in Cancer.



Professor Davies receiving the 2024 Multinational Association of Supportive Care in Cancer Distinguished Service Award (Lille, June 2024).



Dr Amy Taylor presenting at the ECO European Cancer Summit (Brussels, November 2024) – research supported by a 'Rising Star Award' from the European Cancer Community Foundation.

INTERNATIONAL RESEARCH COLLABORATORS (Current)

Belgium

- European Cancer Organisation, Brussels [*EU-Navigate project*]
- Vrije Universiteit Brussel, Brussels [*EU-Navigate project*]
- University of Leuven (KU Leuven) [*Marie Skłodowska-Curie Action, Doctoral Network application*]
- European Pain Federation (EFIC) [*Marie Skłodowska-Curie Action, Doctoral Network application*]

Denmark

- Aarhus Universitet [*Marie Skłodowska-Curie Action, Doctoral Network application*]

France

- Universite Paris-Saclay [*Marie Skłodowska-Curie Action, Doctoral Network application*]
- Institut Curie [*Marie Skłodowska-Curie Action, Doctoral Network application*]

Germany

- MSH Medical School Hamburg [*Marie Skłodowska-Curie Action, Doctoral Network application*]
- Charite Universitaetsmedizin Berlin [*Marie Skłodowska-Curie Action, Doctoral Network application*]
- TimeTeller GmbH [*Marie Skłodowska-Curie Action, Doctoral Network application*]
- Daiichi Sankyo Europe GmbH [*Marie Skłodowska-Curie Action, Doctoral Network application*]

Iceland

- Reykjavik University [*Marie Skłodowska-Curie Action, Doctoral Network application*]



Japan

- Tohoku University Graduate School of Dentistry, Sendai [*Japanese translation / validation of OSAS*]

Portugal

- Polytechnic Institute of Portalegre, Lisbon [*Portuguese translation / validation of OSAS*]

Turkey

- Koç University [*Marie Skłodowska-Curie Action, Doctoral Network application*]
- İstanbul University [*Marie Skłodowska-Curie Action, Doctoral Network application*]

United Kingdom

- Beatson Institute Cancer Research [*Marie Skłodowska-Curie Action, Doctoral Network application*]
- Betsi Cadwaladr University Health Board [*Marie Skłodowska-Curie Action, Doctoral Network application*]
- Bradford Teaching Hospitals NHS Foundation Trust [*T-PAC*]
- Buckinghamshire Health Care NHS Trust [*T-PAC*]
- Bury Hospice, Bury [*POST study*]
- Clatterbridge Cancer Centre, Liverpool [*POST study*]
- Cornwall Partnership NHS Foundation Trust [*POST study*]
- Doccla UK Ltd [*Marie Skłodowska-Curie Action, Doctoral Network application*]
- Duchess of Kent Hospice [*POST study*]
- Edinburgh Cancer Centre, Edinburgh [*CAReS; POST study*]
- Hospiscare, Devon [*POST study*]
- Norfolk and Norwich University Hospitals, Norwich [*POST study*]
- Northern Ireland Cancer Centre, Belfast [*POST study*]
- Princess Alice Hospice, Surrey [*POST study*]
- Royal Cornwall Hospital [*POST study*]
- Royal Surrey County Hospital NHS Foundation Trust, Guildford [*POST study, T-PAC & Marie Skłodowska-Curie Action, Doctoral Network application*]
- South Oxfordshire Community Palliative Care Hub [*POST study*]
- St Columba's Hospice Care, Edinburgh [*POST study*]
- St Raphael's Hospice, Sutton [*POST study*]
- The Clatterbridge Cancer Centre NHS Foundation Trust [*POST study*]
- University Hospital Southampton NHS Foundation Trust [*POST study*]
- University of Surrey [*Marie Skłodowska-Curie Action, Doctoral Network application*]
- University of Warwick [*Marie Skłodowska-Curie Action, Doctoral Network application*]

NATIONAL RESEARCH COLLABORATORS

Trinity College Dublin

- Dr Geraldine Foley (Assistant Professor in Occupational Therapy) [*Patient and family caregiver treatment decision-making in specialist palliative care study*]
- Prof Laure Marignol (Professor in Radiation Therapy) [*Marie Sklodowska-Curie Action, Doctoral Network Application*]
- Dr Lina Zgaga (Associate Professor in Public Health & Primary Care Epidemiology) [*Marie Sklodowska-Curie Action, Doctoral Network Application*]
- Dr Emer Guinan (Associate Professor Physiotherapy) [*Marie Sklodowska-Curie Action, Doctoral Network Application*]

St. James's Hospital (Dublin)

- Clinical Research Facility [*CAReS II*]
- Dr Amanda Lavan (Clinical Senior Lecturer in Medical Gerontology, Trinity College Dublin) [*EU-Navigate; Evaluating cognitive trajectories in older adults with cancer study; OASis III*]
- Prof Roman Romero-Ortuno (Professor in Medical Gerontology, Trinity College Dublin) [*OASis III*]

University College Dublin (Dublin)

- Dr Brona Fullen (Associate Professor, School of Public Health, Physiotherapy and Sports Science) [*Marie Sklodowska-Curie Action, Doctoral Network Application*]
- Prof Bill Watson (Professor of Cancer Biology) [*Marie Sklodowska-Curie Action, Doctoral Network Application*]
- Dr Antoinette Perry (Associate Professor, School of Biology and Environmental Science) [*Marie Sklodowska-Curie Action, Doctoral Network Application*]

The Patient Voice in Cancer Research (University College Dublin)

- Prof Amanda McCann (Professor, UCD Conway Institute of Biomolecular and Biomedical Research) [*Marie Sklodowska-Curie Action, Doctoral Network Application*]

St. Vincent's Hospital (Dublin)

- Prof Michaela Higgins (Clinical Professor in Medical Oncology, University College Dublin) [*POST*]
- Dr Fergus Keane (Consultant Medical Oncologist) [*EU-Navigate*]
- Dr Lynda McSorley (Consultant Medical Oncologist) [*CORreCT*]

St Luke's Hospital (Dublin)

- Prof Sinead Brennan (Consultant Radiation Oncologist) [*EU-Navigate*]

Community Specialist Palliative Care Services (Laois/Offaly)

- Dr Michael Cushen (Palliative Medicine Consultant) [*POST*]

Marymount University Hospital and Hospice (Cork)

- Dr Maria Walsh (Specialty Trainee in Palliative Medicine) [*EXTra I & II studies*]
- Dr Karie Dennehy (Palliative Medicine Consultant) [*POST*]

Milford Care Centre (Limerick)

- Dr Michael Lucey (Palliative Medicine Consultant) [*POST*]

Southeast Palliative Care Centre (SEPCC) at University Hospital Waterford

- Dr Laura Mulqueen (Palliative Medicine Consultant) [*POST*]

INTERNATIONAL RESEARCH PRESENTATIONS

Multinational Association of Supportive Care in Cancer (MASCC) Annual Meeting (Lille, 27th-29th June 2024)

- Davis M, Davies A, McPherson ML, Paice J, Reddy A, Ripamonti C. ASCO / MASCC E-delphi expert consensus guidance on opioid analgesic conversions in patients with cancer-related pain (poster).
- Hayes J, Bruera E, Crawford G, Fleury M, Santos M, Thompson J, Davies A. Multinational Association of Supportive Care in Cancer (MASCC) expert opinion/guidance on the use of clinically assisted hydration in patients with advanced cancer (poster).
- Fagan N, Davies A. European study of opioid induced constipation (E-StOIC) in cancer patients study: clinical features (poster).
- Fagan N, Davies A. European study of opioid induced constipation (E-StOIC) in cancer patients study: management (poster).



Norah Fagan presenting at the MASCC Annual Meeting (Lille, June 2024).

United Kingdom Association of Supportive Care in Cancer (UKASCC) Supportive Oncology Conference (Manchester, 9-11th October 2024)

- Taylor A. What's in a name? POST: Palliative care and Oncology Survey on Terminology (oral presentation).

European Cancer Organisation (ECO) European Cancer Summit (Brussels, 20-21st November 2024)

- Taylor A, Davies A. PRiSM: Specialist Palliative Care's Role in Cancer Survivorship Model. Developing European consensus recommendations on the role of specialist palliative care in cancer survivorship to inform a model of care. (poster).

NATIONAL RESEARCH PRESENTATIONS

The Irish Association for Palliative Care (IAPC) 23rd Annual Education and Research Seminar 2024 (Dublin, 8th February 2024)

- Geoghegan S, Hanley B, McDonald H, O'Dwyer E, Davies A, O'Leary N, Brady B, Balding L. Improving the transfer of discharge prescriptions from an inpatients palliative care unit to the community (poster).

71st Irish Gerontological Society Annual Meeting (Athlone, 4th October 2024)

- Hearne S. Implementing a Pilot Geriatric Oncology Service at a National Cancer Centre in Dublin (oral presentation).

LECTURES / WEBINARS

Cancer Survivorship – Living with and beyond cancer: 2024 London Clinic Lecture (Royal Society of Medicine, London, 7th May 2024)

- Davies A. The potential role of palliative medicine in cancer care (online lecture)

European Society of Medical Oncology (ESMO) Breast Cancer 2024 (Berlin, 16-17th May 2024)

- Davies A. Supportive care for treatment toxicity

12th Guildford Advanced Course (Manchester & London, September 2024)

- Power J. Remote Monitoring
- Taylor A. Cancer survivorship - what is the role of specialist palliative care?

NIHR ARC Palliative and End of Life Care National Leadership webinar (UK, 7th October)

- Davies A. CHELsea II: cluster randomised trial of clinically assisted hydration in patients in the last days of life

Irish College of GP's (Dublin, 18th May 2024)

- Davies A. Certificate in Palliative Care Masterclass (Malignant bowel obstruction)

Irish College of GP's – International Medical Graduate Program (Dublin, 27th November 2024)

- Power J. Palliative Care in the Community

4th Dublin Advanced Pain and Symptom Management Course (Dublin, 2-3rd December 2024)

- Power J. Remote monitoring
- Taylor A. Cancer survivorship - what is the role of specialist palliative care?

PUBLICATIONS

- Davies A, Fagan N, Gonzalez-Barboteo J, Chelazzi C, Economos G, Elsner F, Leach C, Monsen RE, Oldenmenger WH, Remi C, van den Beuken-van Everdingen, M Wüstefeld. Inadequate management of opioid-induced constipation in European cancer pain patients: results of a real-world,

multicentre, observational study ("E-StOIC"). *Supportive Care in Cancer* 2024; 32:701.

<https://doi.org/10.1007/s00520-024-08898-1>

- Davies A, Waghorn M, Skene S. Clinical features of audible upper airway secretions ("death rattle") in patients with cancer in the last days of life. *Supportive Care in Cancer* 2024;32:423.
<https://doi.org/10.1007/s00520-024-08634-9>
- Davis MP, Davies A, McPherson ML, Reddy A, Paice JA, Roeland E, Walsh D, Mercadante S, Case A, Arnold R, Satomi E, Crawford G, Bruera E, Ripamonti C. Opioid analgesic dose and routine conversion ration studies: a scoping review to inform an eDelphi guideline. *Supportive Care in Cancer* 2024;32:542.
<https://doi.org/10.1007/s00520-024-08710-0>
- Fagan N, Davies A, Foley G. How do patients and caregivers in advanced illness support one another in decision-making for patient care? A qualitative interview study of patient and caregiver dyads in specialist palliative care. *Palliative Medicine Reports* 2024;5:417-24.
<https://doi.org/10.1089/pmr.2024.0047>
- Hayes J, Bruera E, Crawford G, Fleury M, Santos M, Thompson J, Davies A. Multinational Association of Supportive Care in Cancer (MASCC) expert opinion/guidance on the use of clinically assisted hydration in patients with advanced cancer. *Supportive Care in Cancer* 2024;32:228.
<https://doi.org/10.1007/s00520-024-08421-6>
- McDonnell M, Bell M, Lawler F, Duffy A. Multidisciplinary inpatient community rehabilitation programmes for frail older people: a scoping review. *Nursing Open* 2024;11::e70088.
<https://doi.org/10.1002/nop2.70088>
- Miranda R, Smets T, Pivodic L, Chambaere K, Pesut B, Duggleby W, Onwuteaka-Philipsen BD, Gomes B, May P, Szczerbińska K, Davies AN, Ferraris D, Pasmán HR, Furlan de Brito M, Barańska I, Gangeri L, Van den Block L. Adapting, implementing and evaluating a navigation intervention for older people with cancer and their family caregivers in six countries in Europe: the Horizon Europe-funded EU NAVIGATE project. *Palliative Care and Social Practice* 2024;7:18.
<https://doi.org/10.1177/26323524241288873>
- Smets T, Pivodic L, Miranda R, Van Campe F, Vinckier C, Pesut B, Duggleby W, Davies AN, Lavan A, May P, Gomes B, Furlan de Brito M, Rodrigues V, Szczerbińska K, Kijowska V, Barańska I, De Buyser S, Ferraris D, Alferi S, Scacciati B, Du Cheyne H, Chambaere K, Gilissen J, van der Plas A GM, Pasmán RH, Onwuteaka-Philipsen BD; EU NAVIGATE; Van den Block L. Implementation and evaluation of a navigation program for people with cancer in old age and their family caregivers: study protocol for the EU NAVIGATE International Pragmatic Randomized Controlled Trial. *Trials* 2024;25:800.
<https://doi.org/10.1186/s13063-024-08633-5>
- Taylor A, Davies A. The role of specialist palliative care in individuals "living beyond cancer": a narrative review of the literature. *Supportive Care in Cancer* 2024;32:414.
<https://doi.org/10.1007/s00520-024-08598-w>
- Webber K, Davies AN, Waghorn M. Do physical symptoms predict psychological issues in patients with cancer?: the Memorial Symptom Assessment Scale-Short Form. *BMJ Supportive & Palliative Care* 2024;13: e920-e923.
<https://doi.org/10.1136/spcare-2023-004228>

UNDERGRADUATE EDUCATION

The ADPM supports teaching / training to both TCD and UCD medical students.

Trinity College Dublin

The ADPM staff provide a range of educational activities for the medical students from TCD, including lectures, 3-week clinical attachments at OLH&CS (72 students in 2024), audit projects, research projects, and student electives. Dr Amy Taylor is the lead for undergraduate education at TCD.

In 2024, the ADPM supervised a group of 2nd year students that performed an audit entitled “Vital sign monitoring in a specialist inpatient palliative care unit.”

The ADPM will continue to support the revision of the TCD medical curriculum, and the proposal for TCD medical students to undertake shorter clinical attachments in palliative care in the 4th or 5th (rather than the 3rd year).

University College Dublin

The ADPM staff provide a range of educational activities for the medical students from UCD, including lectures, half day face-to-face clinical seminars at OLH&CS (300 students in 2023). Dr Jenny Power is the lead for undergraduate education at UCD.

In 2024, the ADPM supervised two medical students undertaking summer electives. During the elective, the students collected data for a clinical audit looking at changes in dosing of drugs given by continuous subcutaneous infusion on the inpatient unit at OLH&CS. The students are due to present the results at the regional Palliative Care Grand Rounds in early 2025.

The ADPM will support the revision of the UCD medical curriculum, and the option for UCD medical students to undertake clinical attachments in palliative care (similar to TCD students). We also want to explore collaborations between TCD and UCD, and interdisciplinary teaching (especially with colleagues from within UCD School of Midwifery and Health Systems).

OTHER EDUCATIONAL ACTIVITIES

Professor Davies and Dr Amy Taylor developed multimedia content on cancer survivorship for the Interact - Europe 100 initiative in 2024 – this is a European multi professional training package for oncology professionals (funded by the European Union and coordinated by the European Cancer Organisation).

Professor Davies and other members of the ADPM organised a national study day on evidence-based medicine and research methodology for Specialists Registrars in Palliative Medicine (Royal College of Physicians Ireland, August 2024).

The ADPM organises a weekly Journal Club, and a weekly Grand Rounds for Palliative care professionals from within and beyond OLH&CS.

The ADPM is also involved in other educational activities within OLH&CS, including the annual Dublin Advanced Pain & Symptom Management course and the recurring Dublin Certificate in Evidence Based Palliative Care.

<https://olh.ie/education-research/courses-and-events/>.